

# Produkt datablad

## HE 28 W/827

LUMILUX T5 HE | Tubular fluorescent lamps 16 mm, high efficiency, with G5 base



- Public buildings
- Offices
- Shops
- Supermarkets and department stores
- Industry
- Outdoor applications only in suitable luminaires

- Good economy and efficiency
- Up to 20 % more economical than LUMILUX T8
- Up to 50 % smaller volume than comparable T8 lamps

### Product features

- Luminous efficacy: up to 104 lm/W
- Very good lumen maintenance: 90 % throughout the service lifetime of the lamp
- Long average lifetime: up to 24,000 h (with QUICKTRONIC ECG)
- Good color rendering group: 1B ( $R_a$  : 80...89)
- Dimmable

### Product benefits

- Good economy and efficiency
- Up to 20 % more economical than LUMILUX T8
- Up to 50 % smaller volume than comparable T8 lamps



## Produkt datablad

---

### Areas of application

- Public buildings
- Offices
- Shops
- Supermarkets and department stores
- Industry
- Outdoor applications only in suitable luminaires

## Teknisk data

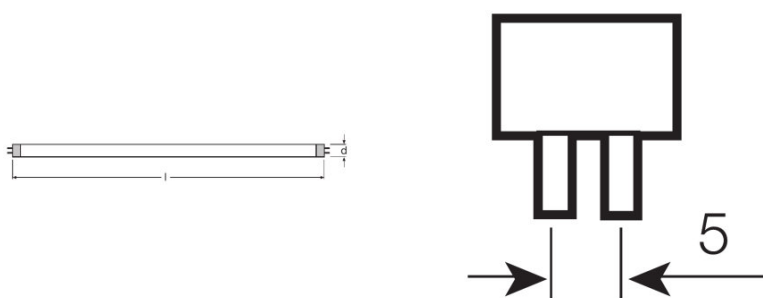
### Elektriske data

ZLDV_Nominal voltage [AGGR]	220 V
ZLDV_Nominal wattage [AGGR]	28.00 W
ZLDV_Rated lamp efficacy (HF data 25 °C) [AGGR]	93 lm/W
ZLDV_Rated wattage [AGGR]	27.90 W

### Photometrical data

ZLDV_Color rendering index Ra [AGGR]	≥80
ZLDV_Rated luminous flux [AGGR]	2600 lm
ZLDV_Luminous flux at 25 °C [AGGR]	2600 lm
ZLDV_Luminous flux at 35 °C [AGGR]	2900 lm
ZLDV_Light color [AGGR]	827
ZLDV_Rated color temperature [AGGR]	2700 K
ZLDV_Nominal luminous flux [AGGR]	2600 lm
ZLDV_Light color (designation) [AGGR]	LUMILUX INTERNA
ZLDV_Rated LLMF at 2,000 h [AGGR]	0.95
ZLDV_Rated LLMF at 4,000 h [AGGR]	0.93
ZLDV_Rated LLMF at 6,000 h [AGGR]	0.92
ZLDV_Rated LLMF at 8,000 h [AGGR]	0.90
ZLDV_Rated LLMF at 12,000 h [AGGR]	0.90
ZLDV_Rated LLMF at 16,000 h [AGGR]	0.90
ZLDV_Rated LLMF at 20,000 h [AGGR]	0.89

### Mål og vekt



ZLDV_Tube diameter [AGGR]	16 mm
ZLDV_Length [AGGR]	1149 mm

## Produkt datablad

ZLDV_Length with base excl. base pins/connection [AGGR]	1149.00 mm
ZLDV_Diameter [AGGR]	16.0 mm
ZLDV_Maximum diameter [AGGR]	16.0 mm

### Temperatures & operating conditions

ZLDV_Rated ambient temp.w.max.luminous flux [AGGR]	35.0 °C
--	---------

### Levetid

ZLDV_Service life [AGGR]	19000 h <sup>1)</sup>
ZLDV_Lifespan [AGGR]	24000 h <sup>1)</sup>
ZLDV_Rated lamp survival factor at 2,000 h [AGGR]	0.99
ZLDV_Rated lamp survival factor at 4,000 h [AGGR]	0.99
ZLDV_Rated lamp survival factor at 6,000 h [AGGR]	0.99
ZLDV_Rated lamp survival factor at 8,000 h [AGGR]	0.99
ZLDV_Rated lamp survival factor at 12,000 h [AGGR]	0.99
ZLDV_Rated lamp survival factor at 16,000 h [AGGR]	0.97
ZLDV_Rated lamp survival factor at 20,000 h [AGGR]	0.85
ZLDV_Operation mode LLMF/LSF [AGGR]	HF
ZLDV_Rated lamp life time [AGGR]	24000 h

<sup>1)</sup> With preheat ECG

### Ytterligere produktdata

ZLDV_Base (standard designation) [AGGR]	G5
ZLDV_Mercury content [AGGR]	1.9 mg
ZLDV_Product remark [AGGR]	Suitable for ECG operation only/Lamp designed for internal luminaire temperatures of 30...40 °C; optimum luminous flux achieved at 35 °C
Appropriate disposal acc. to WEEE	Ja

### Egenskaper

ZLDV_Dimmable [AGGR]	Yes
ZLDV_Suitable for indoor [AGGR]	Yes

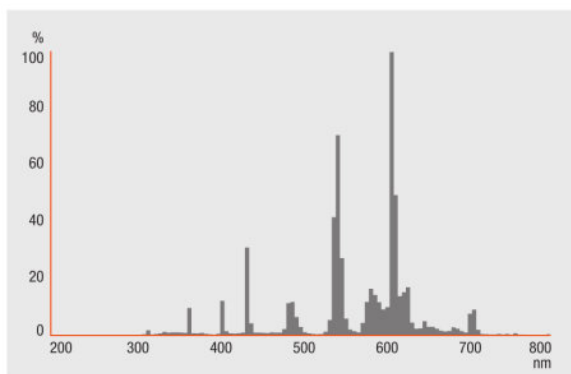
### Sertifikater og standarder

ZLDV_Energy efficiency class [AGGR]	A+
ZLDV_Energy consumption [AGGR]	31 kWh/1000h

## Produkt datablad

### Lysfordeling

---

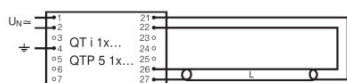


Spectral power distribution

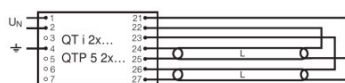
---

### Systemgaranti

OSRAM-system+garanti i kombinasjon med OSRAM ECG-er



Circuit diagram



Circuit diagram

---

### Logistikk data

Product kode	Produkt beskrivelse	Forpakkings enhet (stk/enhet)	Dimensjoner (lengde x bredde x høyde)	Volum	Brutto vekt
--------------	---------------------	-------------------------------	---------------------------------------	-------	-------------

## Produkt datablad

---

4050300645995	HE 28 W/827	NO: VS 20	1182 mm x 83 mm x 104 mm	10.20 dm <sup>3</sup>	2712.50 g
---------------	-------------	--------------	-----------------------------	-----------------------	-----------

---

The mentioned product code describes the smallest quantity unit which can be ordered. One shipping unit can contain one or more single products. When placing an order, for the quantity please enter single or multiples of a shipping unit.

---

### Referanser / Lenker

For mer informasjon om systemgarantien samt vilkårene og betingelsene i garantien besøk

▶ [www.osram.com/system-guarantee](http://www.osram.com/system-guarantee)

---

### Ansvarsfraskrivelse

Endres uten varsel. Sørg alltid for å bruke den nyeste versjonen.

OSRAM GMBH is distribution partner  
of LEDVANCE for Digital Lighting  
Systems and Components

**OSRAM**

OSRAM GmbH  
Marcel-Breuer-Strasse 6  
80807 Munich, Germany

## HE 28 W/827

LUMILUX T5 HE | Tubular fluorescent lamps 16 mm, high efficiency, with G5 base

Produktnavn	Produktnavn ECG	EAN	Nominal wattage + Power loss	Nominell strøm	Lysstrøm ved 35 ° C	Antall belysningsutganger
HE 28 W/827	QT-FIT 5 1x14-35	4008321971234	31.00 W	0.14 A	2600 lm	1
	QT-FIT 5 2x14-35	4008321971258	63.00 W	0.26 A	2600 lm	2
	QTi 1x14/24/21/39 GII	4008321383334	33.00 W	0.15 A	2700 lm	1
	QTi 1x28/54/35/49 GII	4008321383358	32.00 W	0.15 A	2600 lm	1
	QTi 1x28/54 DIM	4050300870588	30.10 W	0.14 A	2600 lm	1
	QTi 1x35/49/80 GII	4008321383372	33.00 W	0.15 A	2700 lm	1
	QTi 2x14/24/21/39 GII	4008321383396	63.00 W	0.29 A	2650 lm	2
	QTi 2x28/54/35/49 GII	4008321383419	61.00 W	0.28 A	2600 lm	2
	QTi 2x28/54 DIM	4050300870717	60.20 W	0.27 A	2600 lm	2
	QTi 2x35/49/80 GII	4008321658951	63.00 W	0.30 A	2650 lm	2
	QTi DALI 1x28/54 DIM	4050300870809	30.10 W	0.14 A	2600 lm	1
	QTi DALI 2x28/54 DIM	4050300870502	60.20 W	0.27 A	2600 lm	2
	QTP5 1x14-35	4008321329035	31.00 W	0.14 A	2600 lm	1
	QTP5 2x14-35	4008321329073	60.00 W	0.26 A	2600 lm	2