

Produkt datablad

HE 35 W/835

LUMILUX T5 HE | Tubular fluorescent lamps 16 mm, high efficiency, with G5 base



- Public buildings
- Offices
- Shops
- Supermarkets and department stores
- Industry
- Outdoor applications only in suitable luminaires

- Good economy and efficiency
- Up to 20 % more economical than LUMILUX T8
- Up to 50 % smaller volume than comparable T8 lamps

Product features

- Luminous efficacy: up to 104 lm/W
- Very good lumen maintenance: 90 % throughout the service lifetime of the lamp
- Long average lifetime: up to 24,000 h (with QUICKTRONIC ECG)
- Good color rendering group: 1B (R_a : 80...89)
- Dimmable

Product benefits

- Good economy and efficiency
- Up to 20 % more economical than LUMILUX T8
- Up to 50 % smaller volume than comparable T8 lamps



Produkt datablad

Areas of application

- Public buildings
- Offices
- Shops
- Supermarkets and department stores
- Industry
- Outdoor applications only in suitable luminaires

Produkt datablad

Teknisk data

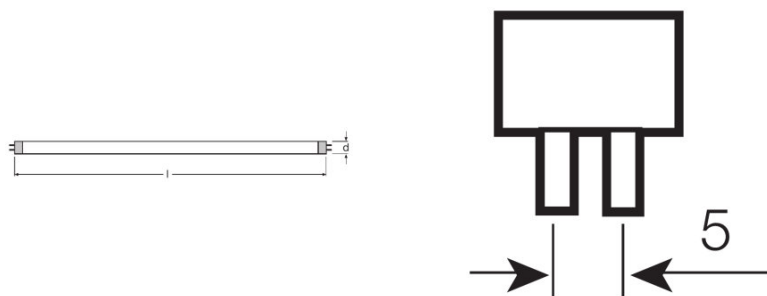
Elektriske data

ZLDV_Nominal voltage [AGGR]	205 V
ZLDV_Nominal wattage [AGGR]	35.00 W
ZLDV_Rated lamp efficacy (HF data 25 °C) [AGGR]	Under clarification by authority and standardization body
ZLDV_Rated wattage [AGGR]	35.50 W

Photometrical data

ZLDV_Color rendering index Ra [AGGR]	≥80
ZLDV_Rated luminous flux [AGGR]	3320 lm
ZLDV_Luminous flux at 25 °C [AGGR]	3320 lm
ZLDV_Luminous flux at 35 °C [AGGR]	3650 lm
ZLDV_Light color [AGGR]	835
ZLDV_Rated color temperature [AGGR]	3500 K
ZLDV_Nominal luminous flux [AGGR]	3320 lm
ZLDV_Light color (designation) [AGGR]	LUMILUX White
ZLDV_Rated LLMF at 20,000 h [AGGR]	0.89

Mål og vekt



ZLDV_Tube diameter [AGGR]	16 mm
ZLDV_Length [AGGR]	1449 mm
ZLDV_Length with base excl. base pins/connection [AGGR]	1449.00 mm
ZLDV_Diameter [AGGR]	16.0 mm

Levetid

ZLDV_Service life [AGGR]	19000 h ¹⁾
--------------------------	-----------------------

Produkt datablad

ZLDV_Lifespan [AGGR]	24000 h ¹⁾
ZLDV_Rated lamp life time [AGGR]	24000 h

¹⁾ With preheat ECG

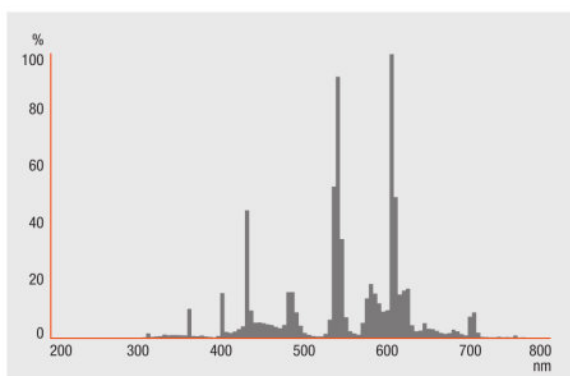
Ytterligere produktdata

ZLDV_Base (standard designation) [AGGR]	G5
ZLDV_Mercury content [AGGR]	1.2 mg
ZLDV_Product remark [AGGR]	Suitable for ECG operation only/Lamp designed for internal luminaire temperatures of 30...40 °C; optimum luminous flux achieved at 35 °C
Appropriate disposal acc. to WEEE	Ja

Egenskaper

ZLDV_Dimmable [AGGR]	Yes
----------------------	-----

Lysfordeling

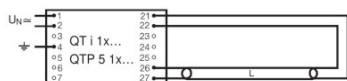


Spectral power distribution

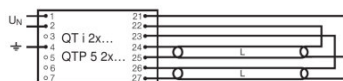
Systemgaranti

OSRAM-system+garanti i kombinasjon med OSRAM ECG-er

Produkt datablad



Circuit diagram



Circuit diagram

Logistikk data

Product kode	Produkt beskrivelse	Forpakkings enhet (stk/enhet)	Dimensjoner (lengde x bredde x høyde)	Volum	Brutto vekt
4050300776415	HE 35 W/835	NO: VS 20	1482 mm x 83 mm x 104 mm	12.79 dm ³	3450.00 g

The mentioned product code describes the smallest quantity unit which can be ordered. One shipping unit can contain one or more single products. When placing an order, for the quantity please enter single or multiples of a shipping unit.

Referanser / Lenker

For mer informasjon om systemgarantien samt vilkårene og betingelsene i garantien besøk

► www.osram.com/system-guarantee

Ansvarsfraskrivelse

Endres uten varsel. Sørg alltid for å bruke den nyeste versjonen.

OSRAM GMBH is distribution partner
of LEDVANCE for Digital Lighting
Systems and Components

OSRAM

OSRAM GmbH
Marcel-Breuer-Strasse 6
80807 Munich, Germany

HE 35 W/835

LUMILUX T5 HE | Tubular fluorescent lamps 16 mm, high efficiency, with G5 base

Produktnavn	Produktnavn ECG	EAN	Nominal wattage + Power loss	Nominell strøm	Lysstrøm ved 35 ° C	Antall belysningsutganger
HE 35 W/835	QT-FIT 5 1x14-35	4008321971234	38.00 W	0.17 A	3200 lm	1
	QT-FIT 5 2x14-35	4008321971258	78.00 W	0.35 A	3300 lm	2
	QTi 1x14/24/21/39 GII	4008321383334	39.00 W	0.18 A	3300 lm	1
	QTi 1x28/54/35/49 GII	4008321383358	38.00 W	0.17 A	3300 lm	1
	QTi 1x35/49/80 DIM	4050300870540	37.80 W	0.17 A	3300 lm	1
	QTi 1x35/49/80 GII	4008321383372	38.00 W	0.17 A	3300 lm	1
	QTi 2x14/24/21/39 GII	4008321383396	76.00 W	0.35 A	3300 lm	2
	QTi 2x28/54/35/49 GII	4008321383419	76.00 W	0.35 A	3300 lm	2
	QTi 2x35/49/80 DIM	4050300870984	74.00 W	0.34 A	3300 lm	2
	QTi 2x35/49/80 GII	4008321658951	77.00 W	0.36 A	3400 lm	2
	QTi 2x35/49 DIM	4050300870670	74.50 W	0.33 A	3300 lm	2
	QTi DALI 1x35/49/80 DIM	4050300870342	37.80 W	0.17 A	3300 lm	1
	QTi DALI 2x35/49/80 DIM	4050300870441	74.00 W	0.34 A	3300 lm	2
	QTi DALI 2x35/49 DIM	4050300870465	74.50 W	0.33 A	3300 lm	2
	QTP5 1x14-35	4008321329035	38.00 W	0.17 A	3300 lm	1
	QTP5 2x14-35	4008321329073	75.00 W	0.33 A	3300 lm	2