

Produkt datablad

HO 49 W/827

LUMILUX T5 HO | Tubular fluorescent lamps 16 mm, high output, with G5 base



- Industry
- Public buildings
- Offices
- Tunnels, underpasses
- Car parks
- Outdoor applications only in suitable luminaires

- Excellent luminous flux
- Up to 20 % more economical than LUMILUX T8
- Up to 50 % smaller volume than comparable T8 lamps

Product features

- Very good lumen maintenance: 90 % throughout the service lifetime of the lamp
- Long average lifetime: up to 24,000 h (with QUICKTRONIC ECG)
- Good color rendering group: 1B (R_a : 80...89)
- Dimmable

Product benefits

- Excellent luminous flux
- Up to 20 % more economical than LUMILUX T8
- Up to 50 % smaller volume than comparable T8 lamps



Produkt datablad

Areas of application

- Industry
- Public buildings
- Offices
- Tunnels, underpasses
- Car parks
- Outdoor applications only in suitable luminaires

Teknisk data

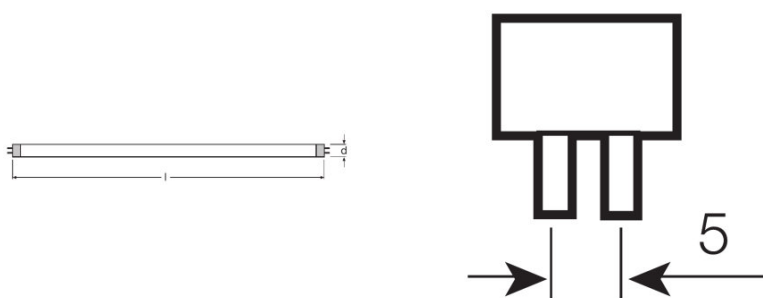
Elektriske data

ZLDV_Nominal voltage [AGGR]	195 V
ZLDV_Nominal wattage [AGGR]	49.00 W
ZLDV_Rated lamp efficacy (HF data 25 °C) [AGGR]	88 lm/W
ZLDV_Rated wattage [AGGR]	49.00 W

Fotometriske data

ZLDV_Color rendering index Ra [AGGR]	≥80
ZLDV_Rated luminous flux [AGGR]	4310 lm
ZLDV_Luminous flux at 25 °C [AGGR]	4310 lm
ZLDV_Luminous flux at 35 °C [AGGR]	4900 lm
ZLDV_Light color [AGGR]	827
ZLDV_Rated color temperature [AGGR]	2700 K
ZLDV_Nominal luminous flux [AGGR]	4310 lm
ZLDV_Light color (designation) [AGGR]	LUMILUX INTERNA
ZLDV_Rated LLMF at 2,000 h [AGGR]	0.95
ZLDV_Rated LLMF at 4,000 h [AGGR]	0.93
ZLDV_Rated LLMF at 6,000 h [AGGR]	0.92
ZLDV_Rated LLMF at 8,000 h [AGGR]	0.90
ZLDV_Rated LLMF at 12,000 h [AGGR]	0.90
ZLDV_Rated LLMF at 16,000 h [AGGR]	0.90
ZLDV_Rated LLMF at 20,000 h [AGGR]	0.89

Mål og vekt



ZLDV_Tube diameter [AGGR]	16 mm
ZLDV_Length [AGGR]	1449 mm

Produkt datablad

ZLDV_Length with base excl. base pins/connection [AGGR]	1449.00 mm
ZLDV_Diameter [AGGR]	16.0 mm

Temperatures & operating conditions

ZLDV_Rated ambient temp.w.max.luminous flux [AGGR]	35.0 °C
--	---------

Levetid

ZLDV_Service life [AGGR]	19000 h ¹⁾
ZLDV_Lifespan [AGGR]	24000 h ¹⁾
ZLDV_Rated lamp survival factor at 2,000 h [AGGR]	0.99
ZLDV_Rated lamp survival factor at 4,000 h [AGGR]	0.99
ZLDV_Rated lamp survival factor at 6,000 h [AGGR]	0.99
ZLDV_Rated lamp survival factor at 8,000 h [AGGR]	0.99
ZLDV_Rated lamp survival factor at 12,000 h [AGGR]	0.99
ZLDV_Rated lamp survival factor at 16,000 h [AGGR]	0.97
ZLDV_Rated lamp survival factor at 20,000 h [AGGR]	0.85
ZLDV_Operation mode LLMF/LSF [AGGR]	HF
ZLDV_Rated lamp life time [AGGR]	24000 h

¹⁾ With preheat ECG

Ytterligere produktdata

ZLDV_Base (standard designation) [AGGR]	G5
ZLDV_Mercury content [AGGR]	1.7 mg
ZLDV_Product remark [AGGR]	Suitable for ECG operation only/Lamp designed for internal luminaire temperatures of 30...40 °C; optimum luminous flux achieved at 35 °C
Appropriate disposal acc. to WEEE	Ja

Egenskaper

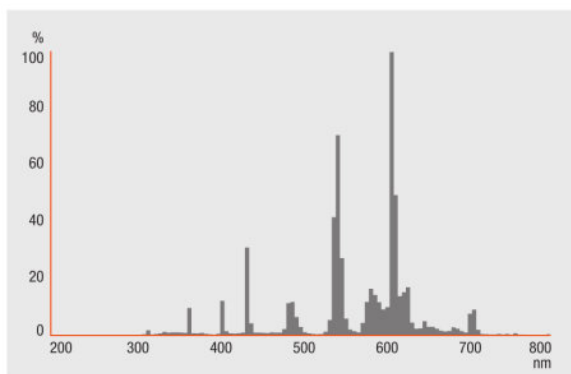
ZLDV_Dimmable [AGGR]	Yes
ZLDV_Suitable for indoor [AGGR]	Yes

Sertifikater og standarder

ZLDV_Energy efficiency class [AGGR]	A+
ZLDV_Energy consumption [AGGR]	55 kWh/1000h

Produkt datablad

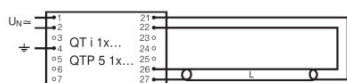
Lysfordeling



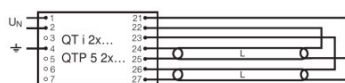
Spectral power distribution

Systemgaranti

OSRAM-system+garanti i kombinasjon med OSRAM ECG-er



Circuit diagram



Circuit diagram

Logistikk data

Product kode	Produkt beskrivelse	Forpakkings enhet (stk/enhet)	Dimensjoner (lengde x bredde x høyde)	Volum	Brutto vekt
--------------	---------------------	-------------------------------	---------------------------------------	-------	-------------

Produkt datablad

4050300796772	HO 49 W/827	NO: VS 20	1482 mm x 83 mm x 104 mm	12.79 dm ³	3450.00 g
---------------	-------------	--------------	-----------------------------	-----------------------	-----------

The mentioned product code describes the smallest quantity unit which can be ordered. One shipping unit can contain one or more single products. When placing an order, for the quantity please enter single or multiples of a shipping unit.

Referanser / Lenker

For mer informasjon om systemgarantien samt vilkårene og betingelsene i garantien besøk

▶ www.osram.com/system-guarantee

Ansvarsfraskrivelse

Endres uten varsel. Sørg alltid for å bruke den nyeste versjonen.

OSRAM is distribution partner
of LEDVANCE of LAMPS

OSRAM

OSRAM GmbH
Marcel-Breuer-Strasse 6
80807 Munich, Germany

HO 49 W/827

LUMILUX T5 HO | Tubular fluorescent lamps 16 mm, high output, with G5 base

Produktnavn	Produktnavn ECG	EAN	Nominal wattage + Power loss	Nominell strøm	Lysstrøm ved 35 ° C	Antall belysningsutganger
HO 49 W/827	QT-FIT 5 1x49	4008321832139	54.00 W	0.24 A	4300 lm	1
	QT-FIT 5 2x49	4008321832153	106.00 W	0.47 A	4300 lm	2
	QTi 1x28/54/35/49 GII	4008321383358	53.00 W	0.24 A	4300 lm	1
	QTi 1x35/49/80 DIM	4050300870540	53.40 W	0.24 A	4300 lm	1
	QTi 1x35/49/80 GII	4008321383372	53.00 W	0.24 A	4300 lm	1
	QTi 2x28/54/35/49 GII	4008321383419	105.00 W	0.46 A	4300 lm	2
	QTi 2x35/49/80 DIM	4050300870984	103.00 W	0.46 A	4300 lm	2
	QTi 2x35/49/80 GII	4008321658951	105.00 W	0.45 A	4300 lm	2
	QTi 2x35/49 DIM	4050300870670	103.60 W	0.45 A	4300 lm	2
	QTi DALI 1x35/49/80 DIM	4050300870342	53.40 W	0.24 A	4300 lm	1
	QTi DALI 2x35/49/80 DIM	4050300870441	101.00 W	0.46 A	4300 lm	2
	QTi DALI 2x35/49 DIM	4050300870465	103.60 W	0.45 A	4300 lm	2
	QTP5 1x49	4008321329370	53.00 W	0.24 A		1
	QTP5 1x49	4008321329370	53.00 W	0.24 A	4300 lm	1
	QTP5 2x49	4008321329431	106.00 W	0.49 A		2
	QTP5 2x49	4008321329431	106.00 W	0.49 A	4300 lm	2