

# Produkt datablad

## FC 22 W/827

LUMILUX T5 FC | Sirkellysrør 16 mm, med 2GX13 base



- Public buildings
- Offices
- Restaurants
- Industry
- Shops
- Supermarkets and department stores
- Hotels

- Extremely economical
- Good quality of light
- Excellent luminous flux
- Excellent uniform illumination with no shadows
- Good average life (with OSRAM ECG)

### Product features

- Good color rendering group: 1B ( $R_a$  : 80...89)
- Dimmable (from 100...1 % with QT<sub>i</sub> DALI/DIM ECG)
- Single-ended round fluorescent lamp
- Tube diameter: 16.0 mm



## Produkt datablad

---

### Product benefits

- Extremely economical
- Good quality of light
- Excellent luminous flux
- Excellent uniform illumination with no shadows
- Good average life (with OSRAM ECG)

---

### Areas of application

- Public buildings
- Offices
- Restaurants
- Industry
- Shops
- Supermarkets and department stores
- Hotels

---

### System guarantee

- Exclusively for operation on electronic control gears

## Produkt datablad

### Teknisk data

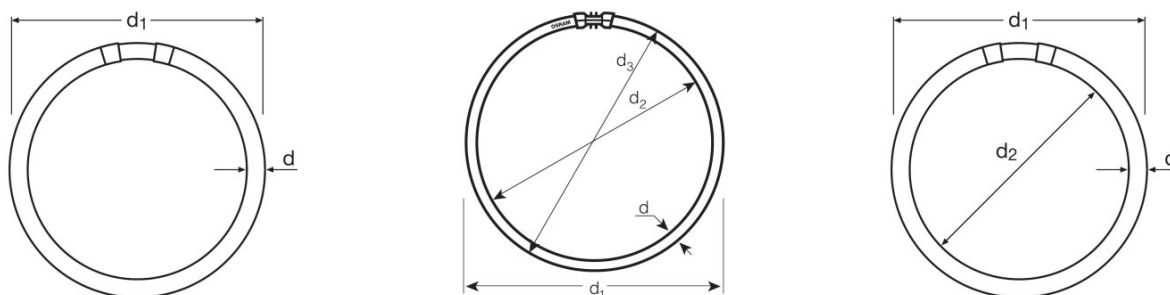
#### Elektriske data

|                             |         |
|-----------------------------|---------|
| ZLDV_Nominal wattage [AGGR] | 22.00 W |
| ZLDV_Rated wattage [AGGR]   | 22.30 W |

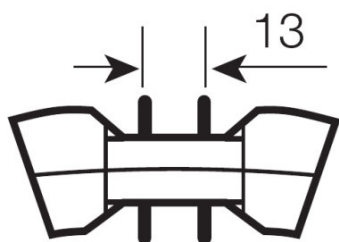
#### Photometrical data

|  |                 |
|--|-----------------|
| ZLDV_Rated lamp efficacy (standard condition) [AGGR] | 81 lm/W         |
| ZLDV_Color rendering index Ra [AGGR]                 | $\geq 80$       |
| ZLDV_Rated luminous flux [AGGR]                      | 1800 lm         |
| ZLDV_Luminous flux at 25 °C [AGGR]                   | 1900 lm         |
| ZLDV_Light color [AGGR]                              | 827             |
| ZLDV_Rated color temperature [AGGR]                  | 2700 K          |
| ZLDV_Nominal luminous flux [AGGR]                    | 1900 lm         |
| ZLDV_Light color (designation) [AGGR]                | LUMILUX INTERNA |
| ZLDV_Rated LLMF at 2,000 h [AGGR]                    | 0.85            |
| ZLDV_Rated LLMF at 4,000 h [AGGR]                    | 0.83            |
| ZLDV_Rated LLMF at 6,000 h [AGGR]                    | 0.80            |
| ZLDV_Rated LLMF at 8,000 h [AGGR]                    | 0.80            |
| ZLDV_Rated LLMF at 12,000 h [AGGR]                   | 0.75            |

#### Mål og vekt



## Produkt datablad



|   |           |
|---|-----------|
| ZLDV_Tube diameter [AGGR]                               | 16 mm     |
| ZLDV_Length [AGGR]                                      | 230.0 mm  |
| ZLDV_Length with base excl. base pins/connection [AGGR] | 225.00 mm |
| ZLDV_Diameter [AGGR]                                    | 16.0 mm   |
| ZLDV_Maximum diameter [AGGR]                            | 16.0 mm   |

### Temperatures & operating conditions

|  |         |
|--|---------|
| ZLDV_Rated ambient temp.w.max.luminous flux [AGGR] | 35.0 °C |
|--|---------|

### Levetid

|  |                       |
|--|-----------------------|
| ZLDV_Service life [AGGR]                           | 8000 h <sup>1)</sup>  |
| ZLDV_Lifespan [AGGR]                               | 12000 h <sup>1)</sup> |
| ZLDV_Rated lamp survival factor at 2,000 h [AGGR]  | 0.99                  |
| ZLDV_Rated lamp survival factor at 4,000 h [AGGR]  | 0.99                  |
| ZLDV_Rated lamp survival factor at 6,000 h [AGGR]  | 0.98                  |
| ZLDV_Rated lamp survival factor at 8,000 h [AGGR]  | 0.92                  |
| ZLDV_Rated lamp survival factor at 12,000 h [AGGR] | 0.50                  |
| ZLDV_Operation mode LLMF/LSF [AGGR]                | HF                    |
| ZLDV_Rated lamp life time [AGGR]                   | 12000 h               |

<sup>1)</sup> With preheat ECG

### Ytterligere produktdata

|   |                                 |
|---|---------------------------------|
| ZLDV_Base (standard designation) [AGGR] | 2GX13                           |
| ZLDV_Mercury content [AGGR]             | 3.8 mg                          |
| ZLDV_Product remark [AGGR]              | Suitable for ECG operation only |
| Appropriate disposal acc. to WEEE       | Ja                              |

### Egenskaper

## Produkt datablad

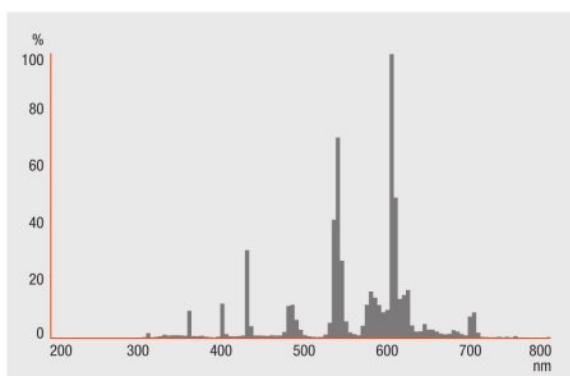
|                                 |     |
|---------------------------------|-----|
| ZLDV_Suitable for indoor [AGGR] | Yes |
|---------------------------------|-----|

### Sertifikater og standarder

|                                     |              |
|-------------------------------------|--------------|
| ZLDV_Energy efficiency class [AGGR] | A            |
| ZLDV_Energy consumption [AGGR]      | 25 kWh/1000h |

### Lysfordeling

---



---

### Spectral power distribution

---

### Systemgaranti

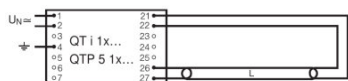
OSRAM-system+garanti i kombinasjon med OSRAM ECG-er

---

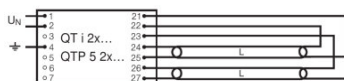
### Utstyr/tilbehør

- Utelukkende for drift med elektroniske forkoblinger

## Produkt datablad



Circuit diagram



Circuit diagram

### Logistikk data

| Product kode  | Produkt beskrivelse | Forpakkings enhet (stk/enhet) | Dimensjoner (lengde x bredde x høyde) | Volum                 | Brutto vekt |
|---------------|---------------------|-------------------------------|---------------------------------------|-----------------------|-------------|
| 4050300646237 | FC 22 W/827         | NO: VS<br>12                  | 375 mm x 245 mm x<br>253 mm           | 23.24 dm <sup>3</sup> | 1865.00 g   |

The mentioned product code describes the smallest quantity unit which can be ordered. One shipping unit can contain one or more single products. When placing an order, for the quantity please enter single or multiples of a shipping unit.

### Referanser / Lenker

For mer informasjon om systemgarantien samt vilkårene og betingelsene i garantien besøk

▶ [www.osram.com/system-guarantee](http://www.osram.com/system-guarantee)

For mer informasjon om QUICKTRONIC elektronisk forkobling gå til

▶ [www.osram.com/QUICKTRONIC](http://www.osram.com/QUICKTRONIC)

### Ansvarsfraskrivelse

Endres uten varsel. Sørg alltid for å bruke den nyeste versjonen.

OSRAM GMBH is distribution partner  
of LEDVANCE for Digital Lighting  
Systems and Components

# OSRAM

OSRAM GmbH  
Marcel-Breuer-Strasse 6  
80807 Munich, Germany

## FC 22 W/827

LUMILUX T5 FC | Sirkellysrør 16 mm, med 2GX13 base

| Produktnavn | Produktnavn ECG          | EAN           | Nominal wattage + Power loss | Nominell strøm | Lysstrøm ved 35 ° C | Antall belysningsutganger |
|-------------|--------------------------|---------------|------------------------------|----------------|---------------------|---------------------------|
| FC 22 W/827 | QT-ECO 1x18-24/220-240 S | 4050300638560 | 22.50 W                      | 0.16 A         | 1650 lm             | 1                         |
|             | QTi 1x14/24/21/39 GII    | 4008321383334 | 25.00 W                      | 0.15 A         | 1800 lm             | 1                         |
|             | QTi 1x14/24 DIM          | 4050300870922 | 25.00 W                      | 0.11 A         | 1750 lm             | 1                         |
|             | QTi 2x14/24/21/39 GII    | 4008321383396 | 49.00 W                      | 0.21 A         | 1800 lm             | 2                         |
|             | QTi 2x14/24 DIM          | 4050300870946 | 49.00 W                      | 0.22 A         | 1750 lm             | 2                         |
|             | QTi 3x14/24 DIM          | 4008321069719 | 73.00 W                      | 0.32 A         | 1750 lm             | 3                         |
|             | QTi 4x14/24 DIM          | 4008321069993 | 98.00 W                      | 0.43 A         | 1750 lm             | 4                         |
|             | QTi DALI 1x14/24 DIM     | 4050300870380 | 25.00 W                      | 0.11 A         | 1750 lm             | 1                         |
|             | QTi DALI 2x14/24 DIM     | 4050300870861 | 49.00 W                      | 0.22 A         | 1750 lm             | 2                         |
|             | QTi DALI 3x14/24 DIM     | 4008321069955 | 73.00 W                      | 0.32 A         | 1750 lm             | 3                         |
|             | QTi DALI 4x14/24 DIM     | 4008321070036 | 98.00 W                      | 0.43 A         | 1750 lm             | 4                         |
|             | QTi DALI-T/E 1x18-57 DIM | 4008321060808 | 26.00 W                      | 0.12 A         | 1800 lm             | 1                         |
|             | QTi DALI-T/E 2x18-42 DIM | 4008321060822 | 51.00 W                      | 0.22 A         | 1800 lm             | 2                         |
|             | QTi-T/E 1x18-57 DIM      | 4008321060860 | 26.00 W                      | 0.12 A         | 1750 lm             | 1                         |
|             | QTi-T/E 2x18-42 DIM      | 4008321060846 | 51.00 W                      | 0.22 A         | 1750 lm             | 2                         |
|             | QT-M 2x26-42/220-240 S   | 4008321110022 | 54.00 W                      | 0.36 A         | 1600 lm             | 2                         |
|             | QTP-M 1x26-42            | 4008321329134 | 25.00 W                      | 0.12 A         | 1800 lm             | 1                         |

## Produkt datablad

| Produktnavn | Produktnavn ECG | EAN           | Nominal wattage + Power loss | Nominell strøm | Lysstrøm ved 35 ° C | Antall belysningsutganger |
|-------------|-----------------|---------------|------------------------------|----------------|---------------------|---------------------------|
|             | QTP-M 2x26-32   | 4008321329158 | 49.00 W                      | 0.22 A         | 1800 lm             | 2                         |

| Produktnavn | Produktnavn ECG          | EAN           | Lysstrøm ved 25 ° C |
|-------------|--------------------------|---------------|---------------------|
| FC 22 W/827 | QT-ECO 1x18-24/220-240 S | 4050300638560 |                     |
|             | QTi 1x14/24/21/39 GII    | 4008321383334 |                     |
|             | QTi 1x14/24 DIM          | 4050300870922 |                     |
|             | QTi 2x14/24/21/39 GII    | 4008321383396 |                     |
|             | QTi 2x14/24 DIM          | 4050300870946 |                     |
|             | QTi 3x14/24 DIM          | 4008321069719 |                     |
|             | QTi 4x14/24 DIM          | 4008321069993 |                     |
|             | QTi DALI 1x14/24 DIM     | 4050300870380 |                     |
|             | QTi DALI 2x14/24 DIM     | 4050300870861 |                     |
|             | QTi DALI 3x14/24 DIM     | 4008321069955 |                     |
|             | QTi DALI 4x14/24 DIM     | 4008321070036 |                     |
|             | QTi DALI-T/E 1x18-57 DIM | 4008321060808 |                     |
|             | QTi DALI-T/E 2x18-42 DIM | 4008321060822 |                     |
|             | QTi-T/E 1x18-57 DIM      | 4008321060860 |                     |
|             | QTi-T/E 2x18-42 DIM      | 4008321060846 |                     |
|             | QT-M 2x26-42/220-240 S   | 4008321110022 | 1600 lm             |
|             | QTP-M 1x26-42            | 4008321329134 |                     |
|             | QTP-M 2x26-32            | 4008321329158 |                     |