

# Produkt datablad

## FC 22 W/830

LUMILUX T5 FC | Sirkellysrør 16 mm, med 2GX13 base



- Public buildings
- Offices
- Restaurants
- Industry
- Shops
- Supermarkets and department stores
- Hotels

- Extremely economical
- Good quality of light
- Excellent luminous flux
- Excellent uniform illumination with no shadows
- Good average life (with OSRAM ECG)

### Product features

- Good color rendering group: 1B ( $R_a$  : 80...89)
- Dimmable (from 100...1 % with QT<sub>i</sub> DALI/DIM ECG)
- Single-ended round fluorescent lamp
- Tube diameter: 16.0 mm



## Produkt datablad

---

### Product benefits

- Extremely economical
- Good quality of light
- Excellent luminous flux
- Excellent uniform illumination with no shadows
- Good average life (with OSRAM ECG)

---

### Areas of application

- Public buildings
- Offices
- Restaurants
- Industry
- Shops
- Supermarkets and department stores
- Hotels

---

### System guarantee

- Exclusively for operation on electronic control gears

## Produkt datablad

### Teknisk data

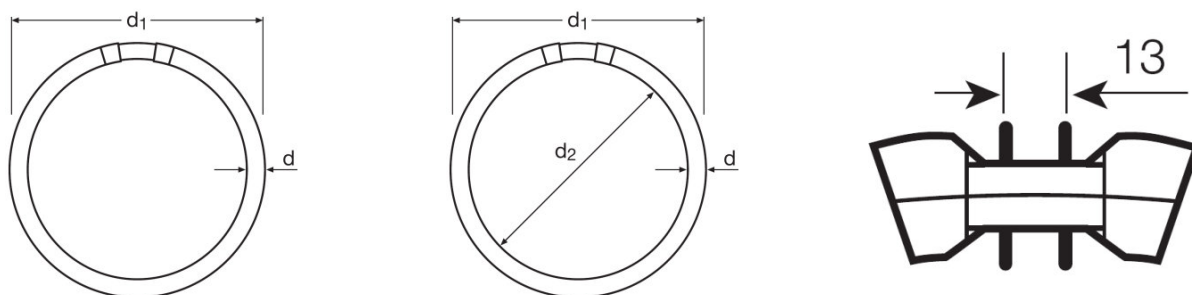
#### Elektriske data

ZLDV_Nominal wattage [AGGR]	22.00 W
ZLDV_Rated wattage [AGGR]	22.30 W

#### Photometrical data

ZLDV_Rated lamp efficacy (standard condition) [AGGR]	81 lm/W
ZLDV_Color rendering index Ra [AGGR]	≥80
ZLDV_Rated luminous flux [AGGR]	1800 lm
ZLDV_Luminous flux at 25 °C [AGGR]	1900 lm
ZLDV_Light color [AGGR]	830
ZLDV_Rated color temperature [AGGR]	3000 K
ZLDV_Nominal luminous flux [AGGR]	1900 lm
ZLDV_Light color (designation) [AGGR]	LUMILUX Warm White
ZLDV_Rated LLMF at 2,000 h [AGGR]	0.85
ZLDV_Rated LLMF at 4,000 h [AGGR]	0.83
ZLDV_Rated LLMF at 6,000 h [AGGR]	0.80
ZLDV_Rated LLMF at 8,000 h [AGGR]	0.80
ZLDV_Rated LLMF at 12,000 h [AGGR]	0.75

#### Mål og vekt



ZLDV_Tube diameter [AGGR]	16 mm
ZLDV_Length [AGGR]	230.0 mm
ZLDV_Length with base excl. base pins/connection [AGGR]	225.00 mm
ZLDV_Diameter [AGGR]	16.0 mm
ZLDV_Maximum diameter [AGGR]	16.0 mm

### Temperatures & operating conditions

ZLDV_Rated ambient temp.w.max.luminous flux [AGGR]	35.0 °C
----------------------------------------------------	---------

### Levetid

ZLDV_Service life [AGGR]	8000 h <sup>1)</sup>
ZLDV_Lifespan [AGGR]	12000 h <sup>1)</sup>
ZLDV_Rated lamp survival factor at 2,000 h [AGGR]	0.99
ZLDV_Rated lamp survival factor at 4,000 h [AGGR]	0.99
ZLDV_Rated lamp survival factor at 6,000 h [AGGR]	0.98
ZLDV_Rated lamp survival factor at 8,000 h [AGGR]	0.92
ZLDV_Rated lamp survival factor at 12,000 h [AGGR]	0.50
ZLDV_Operation mode LLMF/LSF [AGGR]	HF
ZLDV_Rated lamp life time [AGGR]	12000 h

<sup>1)</sup> With preheat ECG

### Ytterligere produktdata

ZLDV_Base (standard designation) [AGGR]	2GX13
ZLDV_Mercury content [AGGR]	3.8 mg
ZLDV_Product remark [AGGR]	Suitable for ECG operation only
Appropriate disposal acc. to WEEE	Ja

### Egenskaper

ZLDV_Suitable for indoor [AGGR]	Yes
---------------------------------	-----

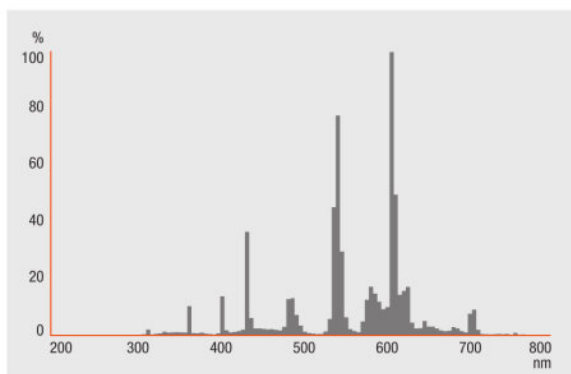
### Sertifikater og standarder

ZLDV_Energy efficiency class [AGGR]	A
ZLDV_Energy consumption [AGGR]	25 kWh/1000h

## Produkt datablad

### Lysfordeling

---



Spectral power distribution

---

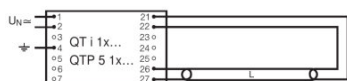
### Systemgaranti

OSRAM-system+garanti i kombinasjon med OSRAM ECG-er

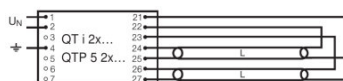
---

### Utstyr/tilbehør

- Utelukkende for drift med elektroniske forkoblinger



Circuit diagram



Circuit diagram

## Produkt datablad

### Logistikk data

Product kode	Produkt beskrivelse	Forpakkings enhet (stk/enhet)	Dimensjoner (lengde x bredde x høyde)	Volum	Brutto vekt
4050300528489	FC 22 W/830	NO: VS 12	375 mm x 245 mm x 253 mm	23.24 dm <sup>3</sup>	1865.00 g

The mentioned product code describes the smallest quantity unit which can be ordered. One shipping unit can contain one or more single products. When placing an order, for the quantity please enter single or multiples of a shipping unit.

### Referanser / Lenker

For mer informasjon om systemgarantien samt vilkårene og betingelsene i garantien besøk

▶ [www.osram.com/system-guarantee](http://www.osram.com/system-guarantee)

For mer informasjon om QUICKTRONIC elektronisk forkobling gå til

▶ [www.osram.com/QUICKTRONIC](http://www.osram.com/QUICKTRONIC)

### Ansvarsfraskrivelse

Endres uten varsel. Sørg alltid for å bruke den nyeste versjonen.

OSRAM GMBH is distribution partner  
of LEDVANCE for Digital Lighting  
Systems and Components

**OSRAM**

OSRAM GmbH  
Marcel-Breuer-Strasse 6  
80807 Munich, Germany

## FC 22 W/830

LUMILUX T5 FC | Sirkellysrør 16 mm, med 2GX13 base

Produktnavn	Produktnavn ECG	EAN	Nominal wattage + Power loss	Nominell strøm	Lysstrøm ved 35 ° C	Antall belysningsutganger
FC 22 W/830	QT-ECO 1x18-24/220-240 S	4050300638560	22.50 W	0.16 A	1650 lm	1
	QTi 1x14/24/21/39 GII	4008321383334	25.00 W	0.15 A	1800 lm	1
	QTi 1x14/24 DIM	4050300870922	25.00 W	0.11 A	1750 lm	1
	QTi 2x14/24/21/39 GII	4008321383396	49.00 W	0.21 A	1800 lm	2
	QTi 2x14/24 DIM	4050300870946	49.00 W	0.22 A	1750 lm	2
	QTi 3x14/24 DIM	4008321069719	73.00 W	0.32 A	1750 lm	3
	QTi 4x14/24 DIM	4008321069993	98.00 W	0.43 A	1750 lm	4
	QTi DALI 1x14/24 DIM	4050300870380	25.00 W	0.11 A	1750 lm	1
	QTi DALI 2x14/24 DIM	4050300870861	49.00 W	0.22 A	1750 lm	2
	QTi DALI 3x14/24 DIM	4008321069955	73.00 W	0.32 A	1750 lm	3
	QTi DALI 4x14/24 DIM	4008321070036	98.00 W	0.43 A	1750 lm	4
	QTi DALI-T/E 1x18-57 DIM	4008321060808	26.00 W	0.12 A	1800 lm	1
	QTi DALI-T/E 2x18-42 DIM	4008321060822	51.00 W	0.22 A	1800 lm	2
	QTi-T/E 1x18-57 DIM	4008321060860	26.00 W	0.12 A	1750 lm	1
	QTi-T/E 2x18-42 DIM	4008321060846	51.00 W	0.22 A	1750 lm	2
	QT-M 2x26-42/220-240 S	4008321110022	54.00 W	0.36 A	1600 lm	2
	QTP-M 1x26-42	4008321329134	25.00 W	0.12 A	1800 lm	1

## Produkt datablad

Produktnavn	Produktnavn ECG	EAN	Nominal wattage + Power loss	Nominell strøm	Lysstrøm ved 35 ° C	Antall belysningsutganger
	QTP-M 2x26-32	4008321329158	49.00 W	0.22 A	1800 lm	2

Produktnavn	Produktnavn ECG	EAN	Lysstrøm ved 25 ° C
FC 22 W/830	QT-ECO 1x18-24/220-240 S	4050300638560	
	QTi 1x14/24/21/39 GII	4008321383334	
	QTi 1x14/24 DIM	4050300870922	
	QTi 2x14/24/21/39 GII	4008321383396	
	QTi 2x14/24 DIM	4050300870946	
	QTi 3x14/24 DIM	4008321069719	
	QTi 4x14/24 DIM	4008321069993	
	QTi DALI 1x14/24 DIM	4050300870380	
	QTi DALI 2x14/24 DIM	4050300870861	
	QTi DALI 3x14/24 DIM	4008321069955	
	QTi DALI 4x14/24 DIM	4008321070036	
	QTi DALI-T/E 1x18-57 DIM	4008321060808	
	QTi DALI-T/E 2x18-42 DIM	4008321060822	
	QTi-T/E 1x18-57 DIM	4008321060860	
	QTi-T/E 2x18-42 DIM	4008321060846	
	QT-M 2x26-42/220-240 S	4008321110022	1600 lm
	QTP-M 1x26-42	4008321329134	
	QTP-M 2x26-32	4008321329158	