

Produkt datablad

HQI-TS 1000 W/NDL/S UVS

POWERSTAR HQI-TS | Kort lysbue, ingen utvendig pære for lukkede armaturer



- Sports stadiums and floodlight systems
- Sports halls and multi-purpose halls
- Airports
- Solar simulation, material testing
- Approved only for use in enclosed luminaires
- Outdoor applications only in suitable luminaires

- High efficiency
- Good to excellent color rendering
- Excellent color stability
- Small loss of luminous flux over the life of the lamp
- Hot restrike capable
- Compact dimensions for small spotlights
- Good positioning thanks to K12s base

Product features

- POWERSTAR quartz technology
- Light colors: neutral white (NDL), daylight (D)



Produkt datablad

Product benefits

- High efficiency
- Good to excellent color rendering
- Excellent color stability
- Small loss of luminous flux over the life of the lamp
- Hot restrike capable
- Compact dimensions for small spotlights
- Good positioning thanks to K12s base

Areas of application

- Sports stadiums and floodlight systems
- Sports halls and multi-purpose halls
- Airports
- Solar simulation, material testing
- Approved only for use in enclosed luminaires
- Outdoor applications only in suitable luminaires

Produkt datablad

Teknisk data

Elektriske data

ZLDV_Nominal wattage [AGGR]	1000.00 W
ZLDV_Rated wattage [AGGR]	1000.00 W
ZLDV_Lamp current [AGGR]	9.7 A
ZLDV_PFC capacitor at 50 Hz [AGGR]	85 μ F ¹⁾
ZLDV_Nominal voltage [AGGR]	120 V
ZLDV_Ignition voltage [AGGR]	4.0 kVp;36 kVp ²⁾

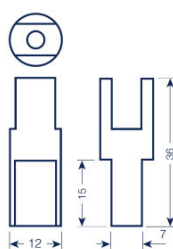
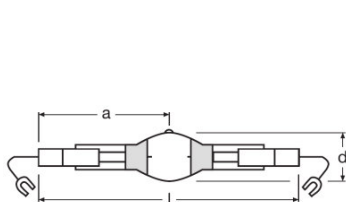
¹⁾ At rated voltage and $\cos \phi \geq 0.9$

²⁾ Minimum;Maximum

Photometrical data

ZLDV_Rated lamp efficacy (standard condition) [AGGR]	90 lm/W
ZLDV_Rated luminous flux [AGGR]	90000 lm
ZLDV_Color rendering index Ra [AGGR]	85
ZLDV_Color temperature [AGGR]	4400 K
ZLDV_Light color [AGGR]	844
ZLDV_Rated LLMF at 2,000 h [AGGR]	0.91
ZLDV_Rated LLMF at 4,000 h [AGGR]	0.86
ZLDV_Rated LLMF at 6,000 h [AGGR]	0.84
ZLDV_UV protection [AGGR]	No

Mål og vekt



K12s-36

ZLDV_Diameter [AGGR]	36.0 mm
ZLDV_Length [AGGR]	187.0 mm
ZLDV_Light center length (LCL) [AGGR]	93.0 mm
ZLDV_Product weight [AGGR]	61.00 g

Temperatures & operating conditions

ZLDV_Maximum permitted outer bulb temperature [AGGR]	950 °C
ZLDV_Maximum permitted pinch temperature [AGGR]	390 °C

Levetid

ZLDV_Rated lamp survival factor at 2,000 h [AGGR]	0.95
ZLDV_Rated lamp survival factor at 4,000 h [AGGR]	0.70
ZLDV_Rated lamp survival factor at 6,000 h [AGGR]	0.50
ZLDV_Lifespan B50 [AGGR]	6000 h

Ytterligere produktdata

ZLDV_Base (standard designation) [AGGR]	K12s-36
ZLDV_Design / version [AGGR]	Clear
ZLDV_Mercury content [AGGR]	70.0 mg
Appropriate disposal acc. to WEEE	Ja

Egenskaper

ZLDV_Dimmable [AGGR]	No
ZLDV_Burning position [AGGR]	p15
ZLDV_Enclosed luminaire required [AGGR]	Yes
ZLDV_Hot restart [AGGR]	Yes

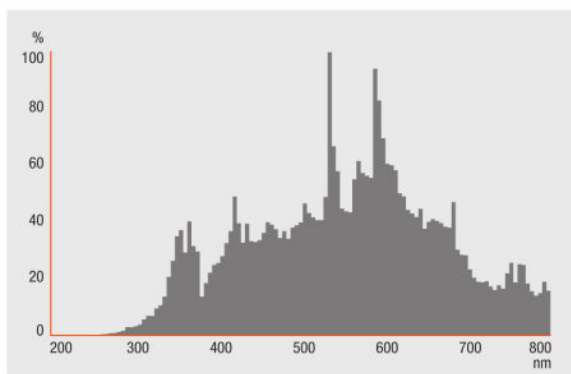
Sertifikater og standarder

ZLDV_Energy efficiency class [AGGR]	A+
ZLDV_Energy consumption [AGGR]	1100 kWh/1000h

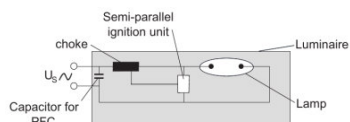
Landsspesifikke kategoriseringer

ZLDV_ILCOS [AGGR]	MN-1000/844-H/E/SL-K12s=36-41/187/H
-------------------	-------------------------------------

Lysfordeling



Spectral power distribution



Circuit diagram

Logistikk data

Product kode	Produkt beskrivelse	Forpakkings enhet (stk/enhet)	Dimensjoner (lengde x bredde x høyde)	Volum	Brutto vekt
4008321591944	HQI-TS 1000 W/NDL/S UVS	NO: VS 10	395 mm x 271 mm x 164 mm	17.56 dm ³	1436.00 g

The mentioned product code describes the smallest quantity unit which can be ordered. One shipping unit can contain one or more single products. When placing an order, for the quantity please enter single or multiples of a shipping unit.

Produkt datablad

Ansvarsfraskrivelse

Endres uten varsel. Sørg alltid for å bruke den nyeste versjonen.

OSRAM GMBH is distribution partner
of LEDVANCE for Digital Lighting
Systems and Components

OSRAM

OSRAM GmbH
Marcel-Breuer-Strasse 6
80807 Munich, Germany