

Produkt datablad

FC 40 W/827

LUMILUX T5 FC | Sirkellysrør 16 mm, med 2GX13 base



- Public buildings
- Offices
- Restaurants
- Industry
- Shops
- Supermarkets and department stores
- Hotels

- Extremely economical
- Good quality of light
- Excellent luminous flux
- Excellent uniform illumination with no shadows
- Good average life (with OSRAM ECG)

Product features

- Good color rendering group: 1B (R_a : 80...89)
- Dimmable (from 100...1 % with QT_i DALI/DIM ECG)
- Single-ended round fluorescent lamp
- Tube diameter: 16.0 mm



Produkt datablad

Product benefits

- Extremely economical
- Good quality of light
- Excellent luminous flux
- Excellent uniform illumination with no shadows
- Good average life (with OSRAM ECG)

Areas of application

- Public buildings
- Offices
- Restaurants
- Industry
- Shops
- Supermarkets and department stores
- Hotels

System guarantee

- Exclusively for operation on electronic control gears

Produkt datablad

Teknisk data

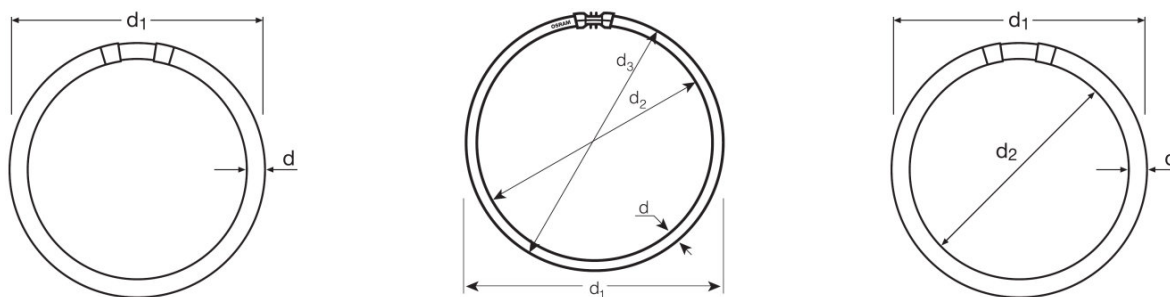
Elektriske data

ZLDV_Nominal wattage [AGGR]	40.00 W
ZLDV_Rated wattage [AGGR]	39.90 W

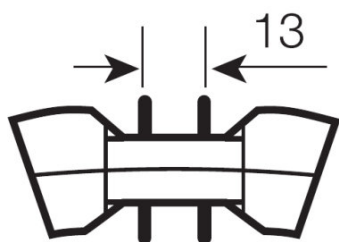
Photometrical data

ZLDV_Rated lamp efficacy (standard condition) [AGGR]	85 lm/W
ZLDV_Color rendering index Ra [AGGR]	≥80
ZLDV_Rated luminous flux [AGGR]	3400 lm
ZLDV_Luminous flux at 25 °C [AGGR]	3400 lm
ZLDV_Light color [AGGR]	827
ZLDV_Rated color temperature [AGGR]	2700 K
ZLDV_Nominal luminous flux [AGGR]	3400 lm
ZLDV_Light color (designation) [AGGR]	LUMILUX INTERNA
ZLDV_Rated LLMF at 2,000 h [AGGR]	0.85
ZLDV_Rated LLMF at 4,000 h [AGGR]	0.83
ZLDV_Rated LLMF at 6,000 h [AGGR]	0.80
ZLDV_Rated LLMF at 8,000 h [AGGR]	0.80
ZLDV_Rated LLMF at 12,000 h [AGGR]	0.75

Mål og vekt



Produkt datablad



ZLDV_Tube diameter [AGGR]	16 mm
ZLDV_Length [AGGR]	305.0 mm
ZLDV_Length with base excl. base pins/connection [AGGR]	300.00 mm
ZLDV_Diameter [AGGR]	16.0 mm
ZLDV_Maximum diameter [AGGR]	16.0 mm

Temperatures & operating conditions

ZLDV_Rated ambient temp.w.max.luminous flux [AGGR]	35.0 °C
--	---------

Levetid

ZLDV_Service life [AGGR]	8000 h ¹⁾
ZLDV_Lifespan [AGGR]	12000 h ¹⁾
ZLDV_Rated lamp survival factor at 2,000 h [AGGR]	0.99
ZLDV_Rated lamp survival factor at 4,000 h [AGGR]	0.99
ZLDV_Rated lamp survival factor at 6,000 h [AGGR]	0.98
ZLDV_Rated lamp survival factor at 8,000 h [AGGR]	0.92
ZLDV_Rated lamp survival factor at 12,000 h [AGGR]	0.50
ZLDV_Operation mode LLMF/LSF [AGGR]	HF
ZLDV_Rated lamp life time [AGGR]	12000 h

¹⁾ With preheat ECG

Ytterligere produktdata

ZLDV_Base (standard designation) [AGGR]	2GX13
ZLDV_Mercury content [AGGR]	3.8 mg
ZLDV_Product remark [AGGR]	Suitable for ECG operation only
Appropriate disposal acc. to WEEE	Ja

Egenskaper

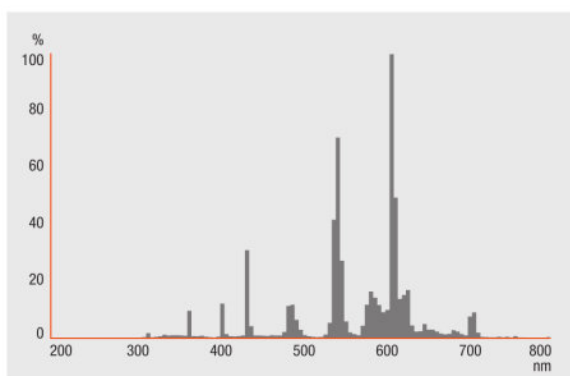
Produkt datablad

ZLDV_Suitable for indoor [AGGR]	Yes
---------------------------------	-----

Sertifikater og standarder

ZLDV_Energy efficiency class [AGGR]	A+
ZLDV_Energy consumption [AGGR]	44 kWh/1000h

Lysfordeling



Spectral power distribution

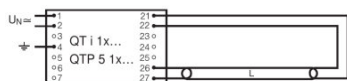
Systemgaranti

OSRAM-system+garanti i kombinasjon med OSRAM ECG-er

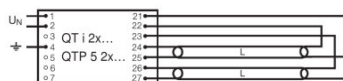
Utstyr/tilbehør

- Utelukkende for drift med elektroniske forkoblinger

Produkt datablad



Circuit diagram



Circuit diagram

Logistikk data

Product kode	Produkt beskrivelse	Forpakkings enhet (stk/enhet)	Dimensjoner (lengde x bredde x høyde)	Volum	Brutto vekt
4050300646251	FC 40 W/827	NO: VS 12	368 mm x 330 mm x 319 mm	38.74 dm ³	2727.00 g

The mentioned product code describes the smallest quantity unit which can be ordered. One shipping unit can contain one or more single products. When placing an order, for the quantity please enter single or multiples of a shipping unit.

Referanser / Lenker

For mer informasjon om systemgarantien samt vilkårene og betingelsene i garantien besøk

▶ www.osram.com/system-guarantee

For mer informasjon om QUICKTRONIC elektronisk forkobling gå til

▶ www.osram.com/QUICKTRONIC

Ansvarsfraskrivelse

Endres uten varsel. Sørg alltid for å bruke den nyeste versjonen.

OSRAM GMBH is distribution partner
of LEDVANCE for Digital Lighting
Systems and Components

OSRAM

OSRAM GmbH
Marcel-Breuer-Strasse 6
80807 Munich, Germany

FC 40 W/827

LUMILUX T5 FC | Sirkellysrør 16 mm, med 2GX13 base

Produktnavn	Produktnavn ECG	EAN	Nominal wattage + Power loss	Nominell strøm	Lysstrøm ved 35 ° C	Antall belysningsutganger
FC 40 W/827	QTi 1x14/24/21/39 GII	4008321383334	43.00 W	0.19 A	3200 lm	1
	QTi 1x21/39 DIM	4050300870564	42.00 W	0.18 A	3100 lm	1
	QTi 2x14/24/21/39 GII	4008321383396	88.00 W	0.36 A	3200 lm	2
	QTi 2x21/39 DIM	4050300870694	82.00 W	0.36 A	3100 lm	2
	QTi DALI 1x21/39 DIM	4050300870366	42.00 W	0.18 A	3100 lm	1
	QTi DALI 2x21/39 DIM	4050300870489	82.00 W	0.36 A	3100 lm	2
	QTi DALI-T/E 1x18-57 DIM	4008321060808	45.00 W	0.20 A	3200 lm	1
	QTi DALI-T/E 2x18-42 DIM	4008321060822	87.00 W	0.38 A	3200 lm	2
	QTi-T/E 1x18-57 DIM	4008321060860	45.00 W	0.20 A	3200 lm	1
	QTi-T/E 2x18-42 DIM	4008321060846	87.00 W	0.38 A	3200 lm	2
	QT-M 2x26-42/220-240 S	4008321110022	88.00 W	0.36 A	3200 lm	2
	QTP-M 1x26-42	4008321329134	43.00 W	0.19 A	3200 lm	1