

# Produkt datablad

## FC 55 W/840

LUMILUX T5 FC | Sirkellysrør 16 mm, med 2GX13 base



- Public buildings
- Offices
- Restaurants
- Industry
- Shops
- Supermarkets and department stores
- Hotels

- Extremely economical
- Good quality of light
- Excellent luminous flux
- Excellent uniform illumination with no shadows
- Good average life (with OSRAM ECG)

### Product features

- Good color rendering group: 1B ( $R_a$  : 80...89)
- Dimmable (from 100...1 % with QT<sub>i</sub> DALI/DIM ECG)
- Single-ended round fluorescent lamp
- Tube diameter: 16.0 mm



## Produkt datablad

---

### Product benefits

- Extremely economical
- Good quality of light
- Excellent luminous flux
- Excellent uniform illumination with no shadows
- Good average life (with OSRAM ECG)

---

### Areas of application

- Public buildings
- Offices
- Restaurants
- Industry
- Shops
- Supermarkets and department stores
- Hotels

---

### System guarantee

- Exclusively for operation on electronic control gears

## Produkt datablad

### Teknisk data

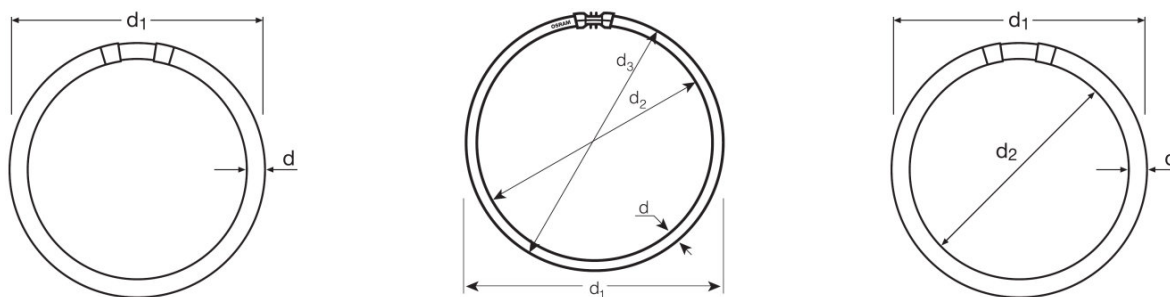
#### Elektriske data

ZLDV_Nominal wattage [AGGR]	55.00 W
ZLDV_Rated wattage [AGGR]	55.00 W

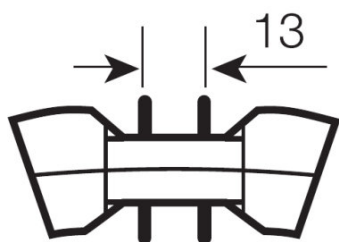
#### Photometrical data

ZLDV_Rated lamp efficacy (standard condition) [AGGR]	76 lm/W
ZLDV_Color rendering index Ra [AGGR]	$\geq 80$
ZLDV_Rated luminous flux [AGGR]	4200 lm
ZLDV_Luminous flux at 25 °C [AGGR]	4200 lm
ZLDV_Light color [AGGR]	840
ZLDV_Rated color temperature [AGGR]	4000 K
ZLDV_Nominal luminous flux [AGGR]	4200 lm
ZLDV_Light color (designation) [AGGR]	LUMILUX Cool White
ZLDV_Rated LLMF at 2,000 h [AGGR]	0.85
ZLDV_Rated LLMF at 4,000 h [AGGR]	0.83
ZLDV_Rated LLMF at 6,000 h [AGGR]	0.80
ZLDV_Rated LLMF at 8,000 h [AGGR]	0.80
ZLDV_Rated LLMF at 12,000 h [AGGR]	0.75

#### Mål og vekt



## Produkt datablad



ZLDV_Tube diameter [AGGR]	16 mm
ZLDV_Length [AGGR]	305.0 mm
ZLDV_Length with base excl. base pins/connection [AGGR]	300.00 mm
ZLDV_Diameter [AGGR]	16.0 mm
ZLDV_Maximum diameter [AGGR]	16.0 mm

### Temperatures & operating conditions

ZLDV_Rated ambient temp.w.max.luminous flux [AGGR]	35.0 °C
----------------------------------------------------	---------

### Levetid

ZLDV_Service life [AGGR]	8000 h <sup>1)</sup>
ZLDV_Lifespan [AGGR]	12000 h <sup>1)</sup>
ZLDV_Rated lamp survival factor at 2,000 h [AGGR]	0.99
ZLDV_Rated lamp survival factor at 4,000 h [AGGR]	0.99
ZLDV_Rated lamp survival factor at 6,000 h [AGGR]	0.98
ZLDV_Rated lamp survival factor at 8,000 h [AGGR]	0.92
ZLDV_Rated lamp survival factor at 12,000 h [AGGR]	0.50
ZLDV_Operation mode LLMF/LSF [AGGR]	HF
ZLDV_Rated lamp life time [AGGR]	12000 h

<sup>1)</sup> With preheat ECG

### Ytterligere produktdata

ZLDV_Base (standard designation) [AGGR]	2GX13
ZLDV_Mercury content [AGGR]	3.8 mg
ZLDV_Product remark [AGGR]	Suitable for ECG operation only
Appropriate disposal acc. to WEEE	Ja

### Egenskaper

## Produkt datablad

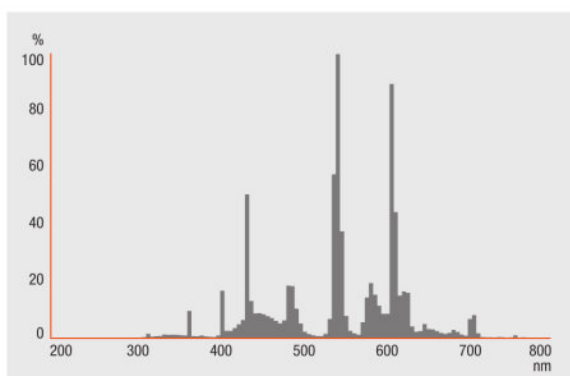
ZLDV_Suitable for indoor [AGGR]	Yes
---------------------------------	-----

### Sertifikater og standarder

ZLDV_Energy efficiency class [AGGR]	A
ZLDV_Energy consumption [AGGR]	61 kWh/1000h

### Lysfordeling

---



---

### Spectral power distribution

---

### Systemgaranti

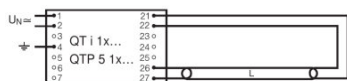
OSRAM-system+garanti i kombinasjon med OSRAM ECG-er

---

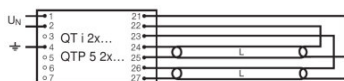
### Utstyr/tilbehør

- Utelukkende for drift med elektroniske forkoblinger

## Produkt datablad



Circuit diagram



Circuit diagram

### Logistikk data

Product kode	Produkt beskrivelse	Forpakkings enhet (stk/enhet)	Dimensjoner (lengde x bredde x høyde)	Volum	Brutto vekt
4050300528588	FC 55 W/840	NO: VS 12	237 mm x 320 mm x 328 mm	24.88 dm <sup>3</sup>	1713.60 g

The mentioned product code describes the smallest quantity unit which can be ordered. One shipping unit can contain one or more single products. When placing an order, for the quantity please enter single or multiples of a shipping unit.

### Referanser / Lenker

For mer informasjon om systemgarantien samt vilkårene og betingelsene i garantien besøk

▶ [www.osram.com/system-guarantee](http://www.osram.com/system-guarantee)

For mer informasjon om QUICKTRONIC elektronisk forkobling gå til

▶ [www.osram.com/QUICKTRONIC](http://www.osram.com/QUICKTRONIC)

### Ansvarsfraskrivelse

Endres uten varsel. Sørg alltid for å bruke den nyeste versjonen.

OSRAM GMBH is distribution partner  
of LEDVANCE for Digital Lighting  
Systems and Components

# OSRAM

OSRAM GmbH  
Marcel-Breuer-Strasse 6  
80807 Munich, Germany

## FC 55 W/840

LUMILUX T5 FC | Sirkellysrør 16 mm, med 2GX13 base

Produktnavn	Produktnavn ECG	EAN	Nominal wattage + Power loss	Nominell strøm	Lysstrøm ved 35 ° C	Antall belysningsutganger
FC 55 W/840	QTi 1x28/54 DIM	4050300870588	59.00 W	0.26 A	4450 lm	1
	QTi 1x35/49/80 GII	4008321383372	59.00 W	0.26 A	4200 lm	1
	QTi 2x28/54 DIM	4050300870717	115.00 W	0.51 A	4450 lm	2
	QTi 2x35/49/80 GII	4008321658951	119.00 W	0.53 A	4200 lm	2
	QTi DALI 1x28/54 DIM	4050300870809	59.00 W	0.26 A	4450 lm	1
	QTi DALI 2x28/54 DIM	4050300870502	115.00 W	0.51 A	4450 lm	2
	QTP-FC 1x55	4008321537041	59.00 W	0.26 A	4200 lm	1